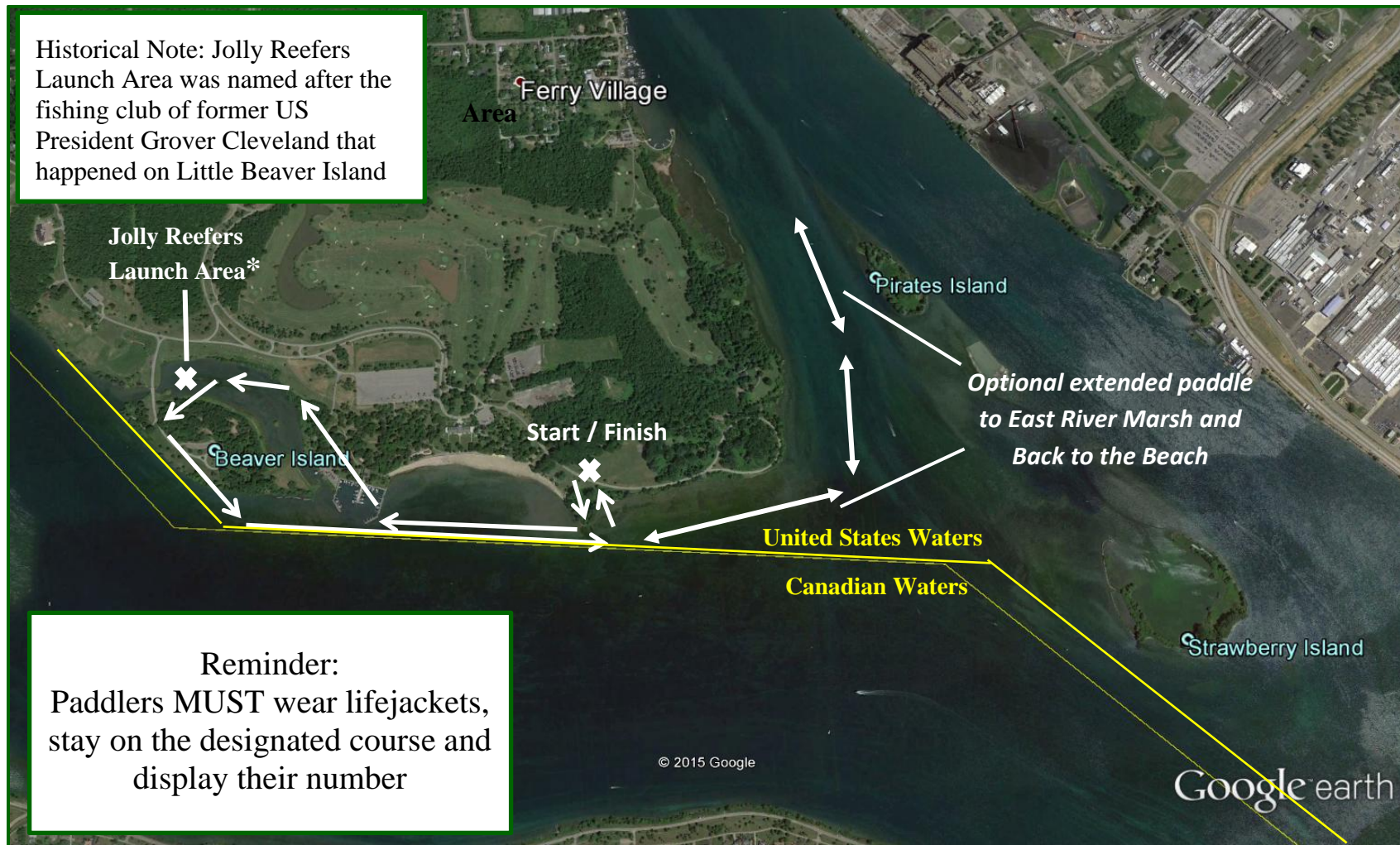


Paddles Up Niagara 2021

Fun Paddle Map



Start / Finish:

10:30 a.m. start - Shelter 2B area at the end of the beach. All paddlers will paddle through Little Beaver past the Jolly Reefers Launch Area and then have the option to return to the beach or take an extended paddle out to the East River Marsh and back to the beach. The entire paddle stays close to the shoreline.

Course Length:

Approximately 2 miles; Extended course – approx. 6 miles